

# STOP THE POWER PLANT – PRESERVE BEDMINSTER



KDC Solar of Bedminster has applied for variances to develop an industrial solar power plant on the Kirby Farm located at the corner of Country Club and Meadow Road in Bedminster. The electric generating facility would power a single user, the Sanofi Corporate Campus located on Route 202/206 in Bridgewater. The proposal includes the clear cutting of 38 acres of forested land, the destruction of meadows and hay fields and the removal of the landmark barn.

Our citizens group, STOP SOMERSET HILLS POWER PLANT, is comprised of residents in Bedminster, Bridgewater and surrounding areas who are opposed to the conversion of farmland into an industrial use in a rural residential area, particularly where the only motive is pure profit at the expense of the residents. KDC solar and Sanofi, the sole user of the power supply, will win big with this project and Bedminster Township will be left holding the bag with nothing to show for it except a 55 acres power plant where meadows, fields and forest now stand. Our concerns include irreparable harm to the area's natural resources, destruction of the rural ambiance and scenic vistas of the 10-acre residential zone, much lower property values and potential contamination of local wells, streams and fresh water wetlands from 49,000 panels of questionable origin, manufacture and content.

## IMPORTANT TOWNSHIP MEETINGS

### APRIL

- 15 Township Committee Meeting**  
**Solar ordinance to be discussed**
- 17 Environmental Committee Meeting**

### MAY

- 2 LAND USE BOARD MEETING**  
**KDC SOLAR HEARING BEGINS**

Please come and show your support.  
The Township Committee and Land Use Board  
need to hear your concerns.

## PLEASE HELP SUPPORT OUR CAUSE

We have partnered with Raritan Headwaters Association and New Jersey Highlands Coalition in our opposition to the proposed power plant.

To help raise money for the legal battle ahead, the New Jersey Highlands Coalition (a 501(c)(3) non-profit organization) has set up a special fund to accept tax deductible contributions on behalf of STOP SOMERSET HILLS POWER PLANT. Contributions to the fund also qualify for matching charitable contributions by employers. Please ask your employer to match your own charitable contribution.

You may make a tax deductible contribution online at  
[http://www.njhighlandscoalition.org/HTML/join\\_contribute.html](http://www.njhighlandscoalition.org/HTML/join_contribute.html)  
(PLEASE BE SURE TO WRITE "SSHPP DONATION" IN THE MEMO SECTION).

### For more information visit

<http://www.preservebedminster.com>

### Follow us on Facebook

<http://www.facebook.com/bedminsterbarn>

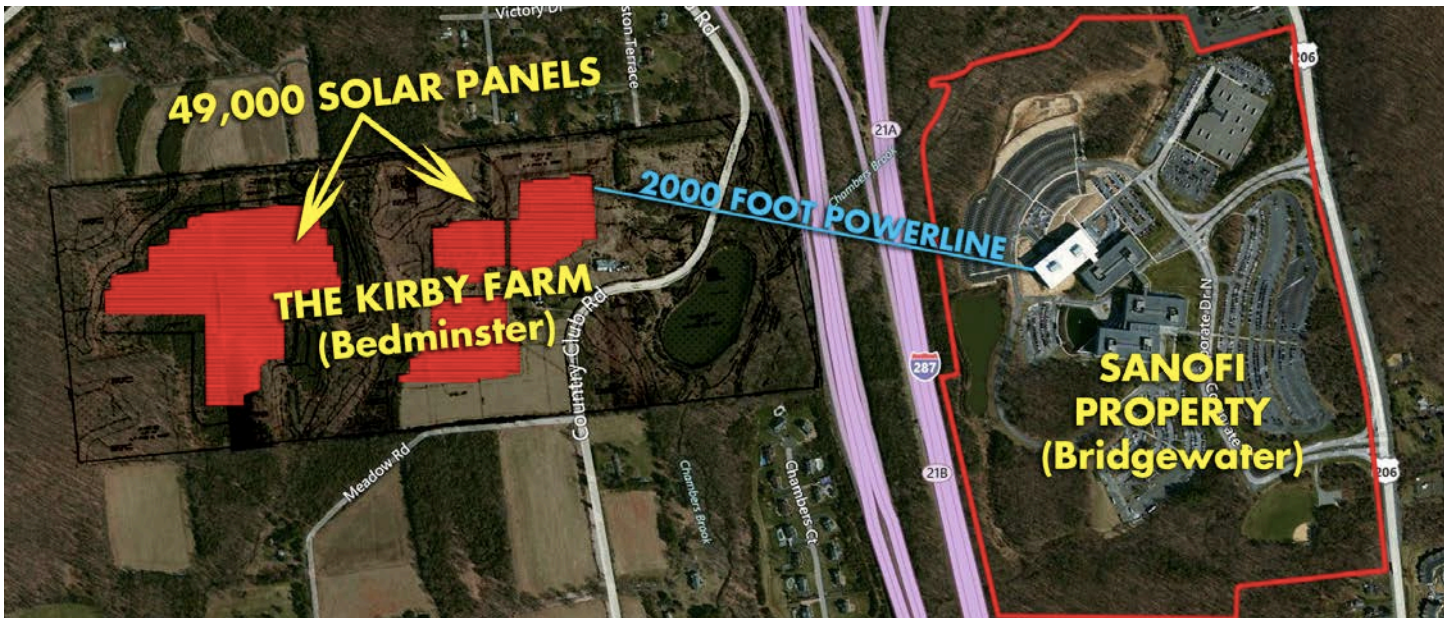
### Sign our petition on change.org

<http://tinyurl.com/bedminsterbarn>

### Join our mailing list

[preservebedminster@gmail.com](mailto:preservebedminster@gmail.com)

# 55-ACRE POWER PLANT ON BEDMINSTER FARMLAND



Above is the proposed layout for the industrial sized solar power plant located at the corner of Country Club and Meadow Road. The red outline represents the size of the Sanofi Property.

Members of our group visited Bedminster Town Hall and reviewed the KDC Solar application and here is a summary of their findings.

- The application claims the facility will produce enough electricity to power 1,053 homes (thing is, none of it's staying in Bedminster).
- The berm along Country Club & Meadow Road is approx. 2,400 feet long x 100' to 200' wide x 8'-9' tall (but site plan shows berm as high as 16' in places).
- Sight triangle easement is shown at Northwest quadrant of Country Club and Meadow Road intersection so traffic is visible around berm (safety issue).
- According to the application "It is proposed to install one (1) casing of either 16 or 24 inches for a total length of approximately 2,000 feet". The electrical conduit will start at the jacking pit on the Kirby Farm travel under Country Club Road, past the Kirby East pond, under Chambers Brook, under the 2 lanes of the Rt. 78 East to Rt. 287 South link, under the 2 lanes of the Rt. 287 North to Rt. 78 East link and under 9 lanes of Route 287 to a receiving pit located on the Sanofi Campus.
- Site plan shows (6) 2 MW Inverter Power Stations, (1) 1 MW Inverter Power Station and (1) Main Switchboard.
- The unspecified quantity of solar panels will be installed on 3,361 W6x9 driven steel pilings

KDC Solar installation in Vineland, NJ  
<http://www.kdcsolar.com/includes/banner-acf.jpg>



<http://ambercontractors.com/wp-content/gallery/back-river-waste-water-treatment-plant-solar-farm-baltimore-md/craigs-pics-023.jpg>

**Follow us on Facebook.com/bedminsterbarn**  
**PreserveBedminster.com for more info**