



THE

POWER PLANT

GREEDY, not green!

**40,484 - 8 FT. TALL SOLAR PANELS
Covering 38.4 ACRES**

106 ACRES OF FARMLAND LOST

**11 MEGA WATT POWERPLANT IN
BEDMINSTER POWERING ONLY
SANOFI IN BRIDGEWATER**

**KDC HAS YET TO DISCLOSE THE TYPE
OF SOLAR PANELS THEY WILL USE**

**NEXT LAND USE BOARD HEARING
JUNE 5th at 7:00 PM AT
BEDMINSTER TOWN HALL**

www.preservebedminster.com

S

S

H

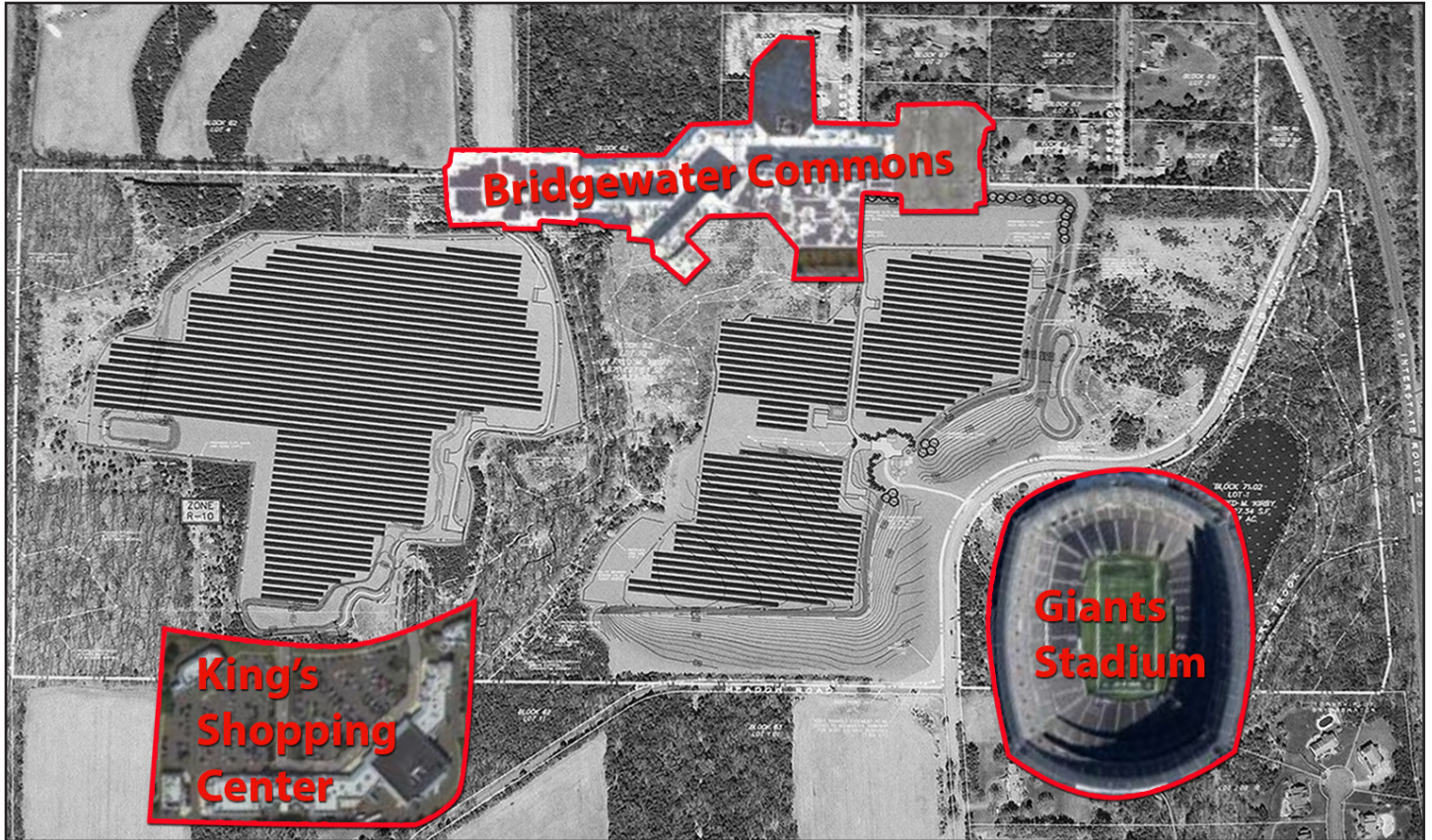
P

P

IF BEDMINSTER'S ZONING IS BUSTED, THIS COULD BE YOUR BACKYARD

KDC Solar of Bedminster has applied for a variance to develop an industrial scale solar power plant on the Kirby Farm located at the corner of Country Club and Meadow Road in Bedminster.

Help keep Bedminster the rural farmland that we know and love. A variance allowing for this type of industrial scale power plant on rural residentially zoned land would set a bad precedent for the future. Come to the Land Use Board meetings and speak out against this project.



The photo above is the proposed solar installation on the Kirby farm. The black lines represent the planned location and size of the 40,484 solar panels. The images of the Bridgewater Commons, Giants Stadium and the King's shopping plaza are to scale and show the magnitude of the installation.

LEGAL DEFENSE IS COSTLY, PLEASE DONATE

We have partnered with Raritan Headwaters Association and New Jersey Highlands Coalition in our opposition to the proposed power plant.

To help raise money for the legal battle ahead, the New Jersey Highlands Coalition (a 501(c)(3) non-profit organization) has set up a special fund to accept tax deductible contributions on behalf of STOP SOMERSET HILLS POWER PLANT. Contributions to the fund also qualify for matching charitable contributions by employers. Please ask your employer to match your own charitable contribution.

You may make a tax deductible contribution online at http://www.njhighlandscoalition.org/HTML/join_contribute.html
(PLEASE BE SURE TO WRITE "SSHPP DONATION" IN THE MEMO SECTION).