

KDC WANTS TO BREAK BEDMINSTER RURAL ZONING

KDC Solar of Bedminster has applied for a variance to develop an industrial scale solar power plant on the Kirby Farm located at the corner of Country Club and Meadow Road in Bedminster. The 11 mega watt electric generating facility would power a single user, the Sanofi Corporate Campus located on Route 202/206 in Bridgewater. The proposal includes the installation of 40,484 solar panels on 38.4 acres of the Kirby Farm. The Land Use Board hearing on this variance started on October 3, 2013 and will continue on November 14, 2013 at the Bedminster Township School at 234 Somerville Road at 7 p.m.

PLEASE HELP SUPPORT OUR CAUSE

We have partnered with Raritan Headwaters Association and New Jersey Highlands Coalition in our opposition to the proposed power plant.

To help raise money for the legal battle ahead, the New Jersey Highlands Coalition (a 501(c)(3) non-profit organization) has set up a special fund to accept tax deductible contributions on behalf of STOP SOMERSET HILLS POWER PLANT. Contributions to the fund also qualify for matching charitable contributions by employers. Please ask your employer to match your own charitable contribution.

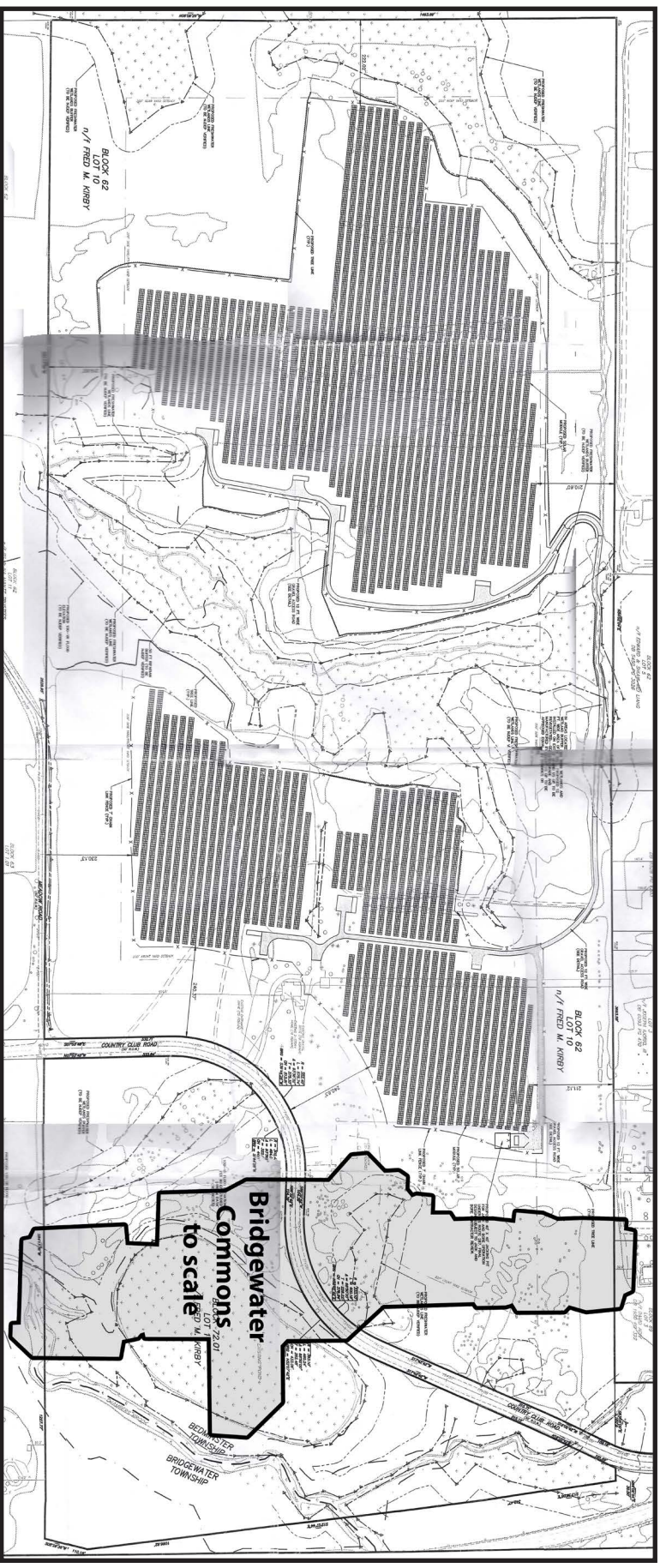
You may make a tax deductible contribution online at
http://www.njhighlandscoalition.org/HTML/join_contribute.html
(PLEASE BE SURE TO WRITE "SSHPP DONATION" IN THE MEMO SECTION).

Attorney Michelle Donato asked Tom Lynch, Executive Vice President of KDC, "When you drive down Country Club and Meadow at this time, what do you see looking at the Kirby Farm?" His response was "Litter". This doesn't sound like someone who is *dedicated to preserving, protecting and enhancing Bedminster's natural and cultural resources, and promoting a sustainable future for the Township and the region (from Bedminster Master Plan).*

**SHOW YOUR SUPPORT, PLEASE ATTEND
THE LAND USE BOARD HEARING
NOVEMBER 14 at 7:00 PM AT
BEDMINSTER TOWNSHIP SCHOOL**

www.preservebedminster.com

THIS COULD HAPPEN IN YOUR BACKYARD!



Above is the proposed layout for the industrial sized solar power plant located at the corner of Country Club and Meadow Road. The shaded area represents the 40,484 solar panels. The project is more than twice the size of the Bridgewater Commons Mall.

The image to the right is captured from a video rendering posted by KDC. The solar project animation shows the purposed project after construction. (http://www.youtube.com/watch?feature=player_embedded&v=b1OKk7OpkBO)

KDC states that "The site frontage along Country Club and Meadow Roads will be graded in such a way as to both hide the solar panels and maintain the rural character of the street scape."

In their minds it is OK to destroy farmland and disturb wildlife as long as you can't see it from the road.

