



THE

POWER PLANT

**IF BEDMINSTER'S ZONING IS BROKEN
THIS COULD BE YOUR BACKYARD**



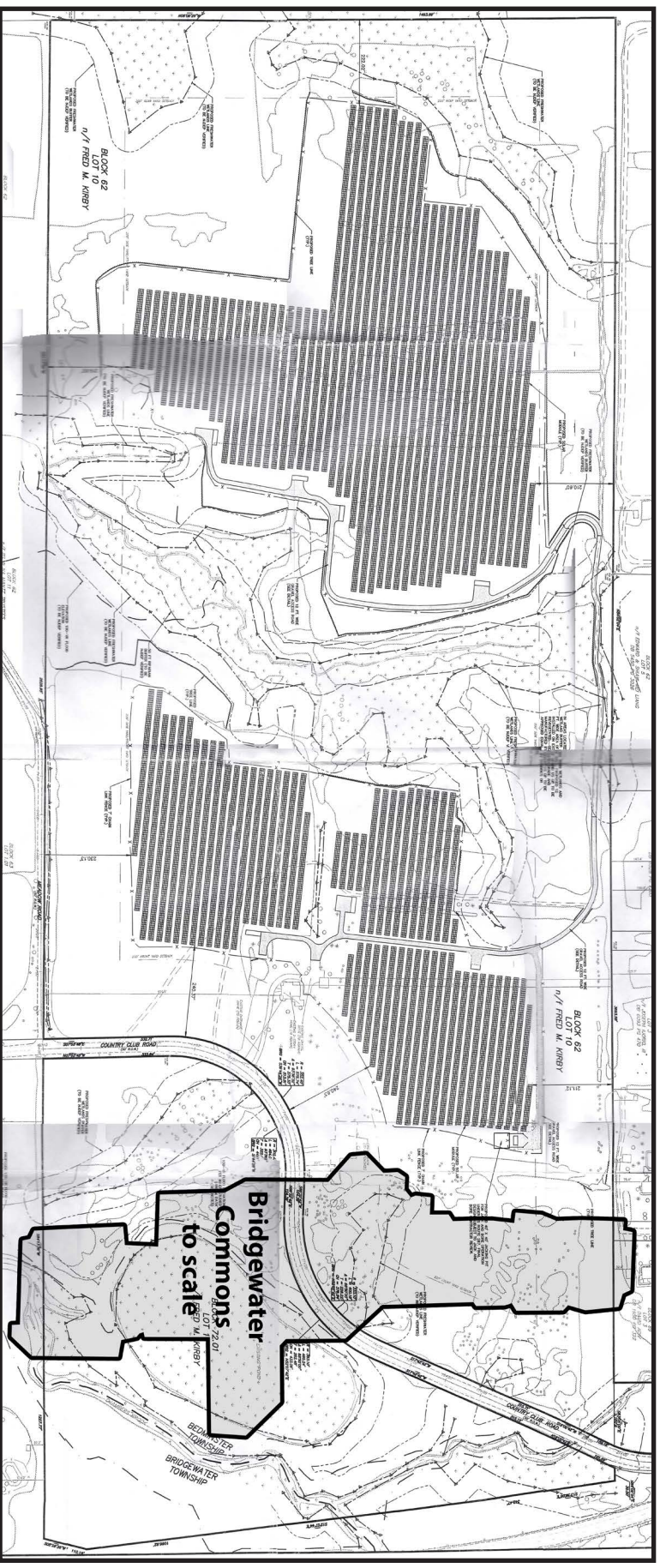
KDC Solar of Bedminster has applied for a variance to develop an industrial scale solar power plant on the Kirby Farm located at the corner of Country Club and Meadow Road in Bedminster. The 11 mega watt electric generating facility would power a single user, the Sanofi Corporate Campus located on Route 202/206 in **Bridgewater**. The proposal includes the installation of 40,484 solar panels on 38.4 acres of the Kirby Farm.

**NEXT LAND USE BOARD HEARING
JANUARY 9 at 7:00 PM AT
BEDMINSTER TOWN HALL**

Read the hearing transcripts and view information about this project at
www.preservebedminster.com

S
S
H
P
P

PRESERVE BEDMINSTER'S RURAL CHARACTER



Above is the proposed layout for the industrial sized solar power plant located at the corner of Country Club and Meadow Road. The shaded area represents the 40,484 solar panels. The project is more than twice the size of the Bridgewater Commons Mall.

LEGAL FUNDS ARE RUNNING LOW, PLEASE DONATE

We have partnered with Raritan Headwaters Association and New Jersey Highlands Coalition in our opposition to the proposed power plant.

To help raise money for the legal battle ahead, the New Jersey Highlands Coalition (a 501 (c)(3) non-profit organization) has set up a special fund to accept tax deductible contributions on behalf of STOP SOMERSET HILLS POWER PLANT. Contributions to the fund also qualify for matching charitable contributions by employers. Please ask your employer to match your own charitable contribution.

You may make a tax deductible contribution online at

http://www.njhighlandscollection.org/HTML/join_contribute.html

(PLEASE BE SURE TO WRITE "SSHPP DONATION" IN THE MEMO SECTION).